



PRODUCT NAME:

GRADATION Wave Panel

MANUFACTURER/SUPPLIER:

Décor Acoustics
5403 Western Ave #C
Boulder, CO 80301
Ph: (720) 449-3063
Email: sales@DecorAcoustics.com
Website: www.DecorAcoustics.com/WAVE



PRODUCT DESCRIPTION:

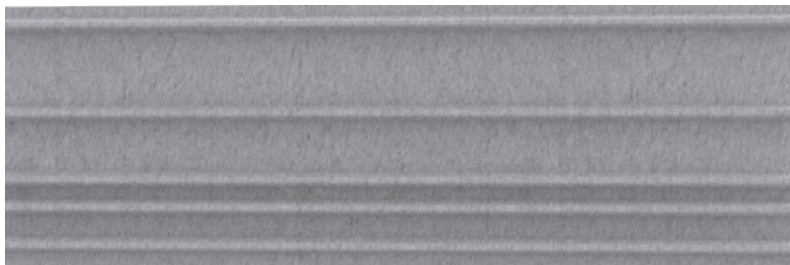
The **GRADATION** Wave Panels consist of increasingly gradational flat sections which are broken up by parallel, equal height, ribs. The GRADATION panels can be split into sections, and have the pattern repeat indefinitely.

- ✓ Made from recycled PET (65-85% based on color)
- ✓ Rigid panel with a high NRC value
- ✓ Available in standard or fire-retardant versions
- ✓ Easy installation process
- ✓ CARB 2 and LEED-Compliant

NRC Acoustic data:

Installation Method:	NRC:
Direct Application	0.50
2" air cavity	0.75
2" cavity (filled with mineral wool)	0.80

a. installed 'Horizontally'



b. installed 'Vertically'



COLORS:



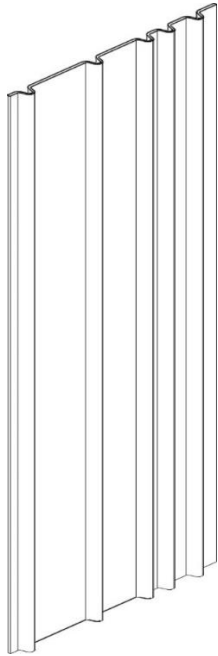
PANEL SIZE:

Panel Length: 2.39 m (~ 94-1/8")
Panel Width: 0.79 m (~ 31-1/8")
Panel Thickness: 4.3 cm (~ 1-3/4")
PET Thickness: 10 mm (2/5")

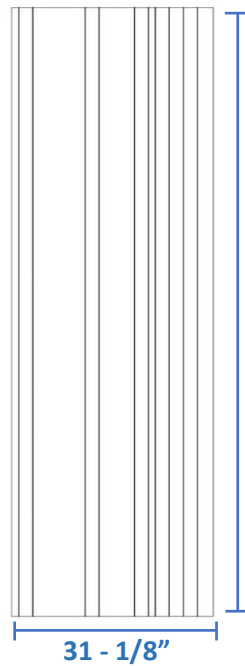


Profile angles:

3D



'face' view

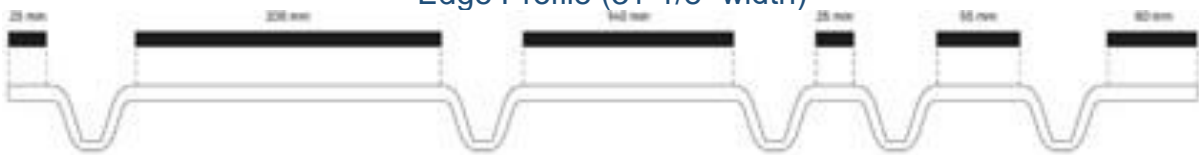


94 - 1/8"

'side' view



Edge Profile (31-1/8" width)

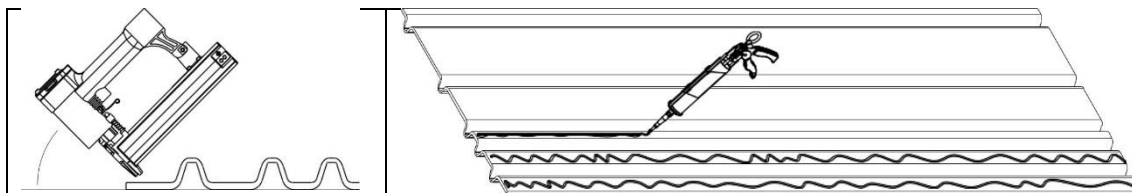


WAVE Acoustics PHYSICAL SPECIFICATIONS:

- Composition :** 100% felt (65-85% recycled)
- Fire-Rating :** Class A (ASTM e84)
B-s2, d0 (EN 13501-12018)
- Martindale Rating :** 100,000
- Pilling :** 3/4

BASIC APPLICATION INFORMATION:

WAVE Panels can be glued or nailed, either directly to the surface or with spacing (to allow for higher NRC values)



GENERAL CONSIDERATIONS:

- Natural (minor) color variation in panels can occur due to the inherent nature of using recycled inputs.