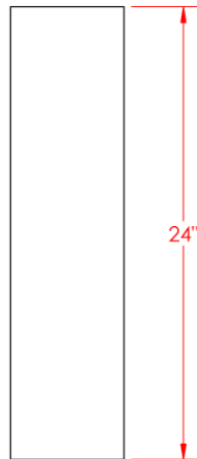
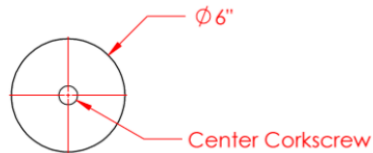


## Acoustifoam™ CYLINDRICAL Ceiling Baffles - Installation Instructions

For specific accessory component information, detail drawings and information or other technical elements, please contact Décor Acoustics. Note: If significant changes to structure are to be made, such as mounting cables into framing members, such installation impacts should be reviewed and signed off on by a structural engineer or general contractor licensed in the state where installation occurs.

### General Notes for CYLINDRICAL BAFFLES:

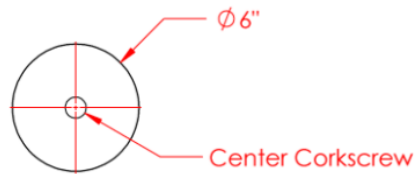
- 1) Cylindrical Baffles come 'natural' (un-coated), colored with Quick Ship colors, or can be 'Pantone Custom Colored' ('PCC').
- 2) Cylindrical Baffles can be suspended vertically or horizontally.
- 3) Store acoustical panels out of direct UV sunlight.
- 4) Store and protect acoustical panels from the elements and from damage.
- 5) Avoid hanging Cylindrical Baffles greater than 10 feet below the structural ceiling. Extensive cabling/chaining will cause baffles to swing if suspended between HVAC air streams.
- 6) Do not subject acoustical panels to critical edge lighting without first consulting Décor Acoustics.



- 7) Store and protect baffles from the elements and from damage.
- 8) Suspension hardware is not to be pre-installed.
- 9) Do not subject baffles to critical edge lighting without first consulting Sustainable Materials.
- 10) If baffles are going to be exposed to corrosive fumes (e.g. aquatic center) always use 316 stainless steel corkscrews, wires/cables and other hardware.
- 11) Always consult with a structural engineer for concerns with structural integrity. Sustainable Materials assumes no responsibility for incorrect installations.

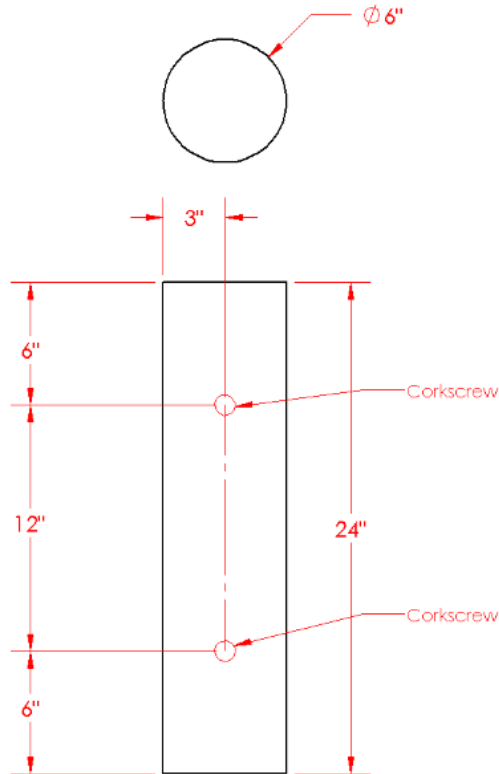
**Installing 2-7/8" stainless corkscrew hangers in a Cylindrical Baffle for vertical application:**

- 1) Corkscrew hangers are to be installed in the field by an approved, licensed contractor. Wire/cables and cable mounts/anchors to be provided by installer.
- 2) Mark the center point of each baffle at end(s) to be attached.
- 3) Center corkscrew hanger over the center point. Hold hanger vertically and gently press hanger until the corkscrew hanger penetrates foam, turning in a clockwise motion.
- 4) Turn corkscrew hanger clockwise until the top coil in each corkscrew hanger compresses the surface by approximately 1/16".



**Installing 2-7/8" stainless corkscrew hangers in a Cylindrical Baffle for horizontal application:**

- 1) Corkscrew hangers are to be installed in the field by an approved, licensed contractor. Wire/cables and cable mounts/anchors to be provided by installer.
- 2) For horizontal application, it is important to notify manufacturer of horizontal installation intentions. Therefore, each standard Cylindrical Baffles would be equipped with two (2) 2-7/8" long corkscrew hangers.



#### **Hanging Cable from Joists and/or Trusses (for **CEILING** applications):**

- 1) Cylindrical Baffles can be wire/cable tied directly to the top or bottom of joists and/or trusses. Baffles attached to the top of the joists will hang beside the joist, and baffles attached at the bottom will hang below the joists.
- 2) Use a minimum 1/16" wire, cable or lightweight chain to suspend baffles from joists or trusses.
- 3) Attach wire/cable from the structural ceiling by looping the wire/cable around ceiling joists or trusses.
- 4) Thread the tie wire/cable through the grommet or eye hook and then loop around the joists or trusses.
- 5) Twist the wire to complete connection.
- 6) Follow best practices for structural mounting into framing members. Such installation impacts appropriately land in the purview of a structural engineer.

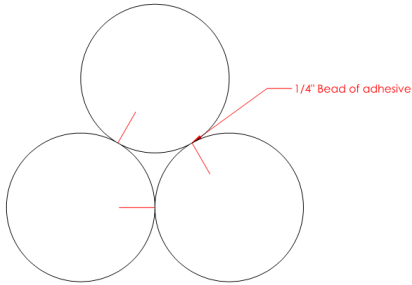
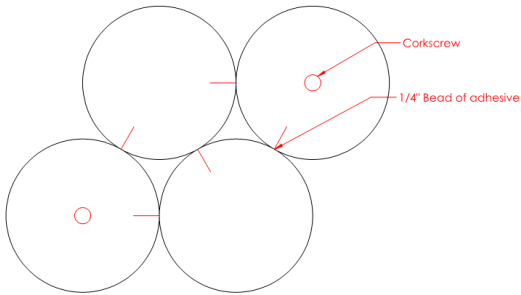
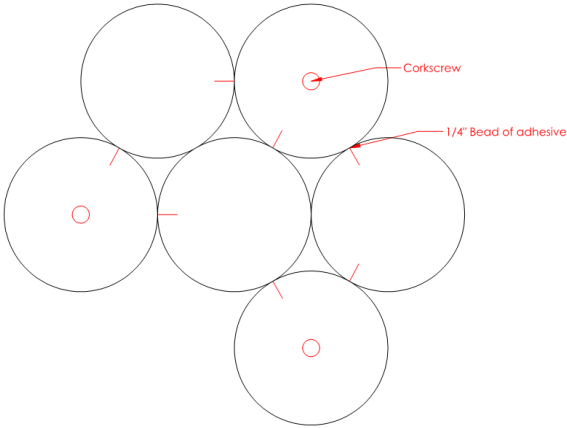
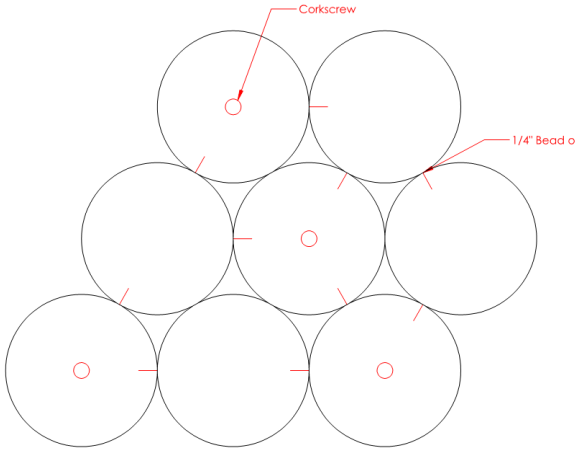
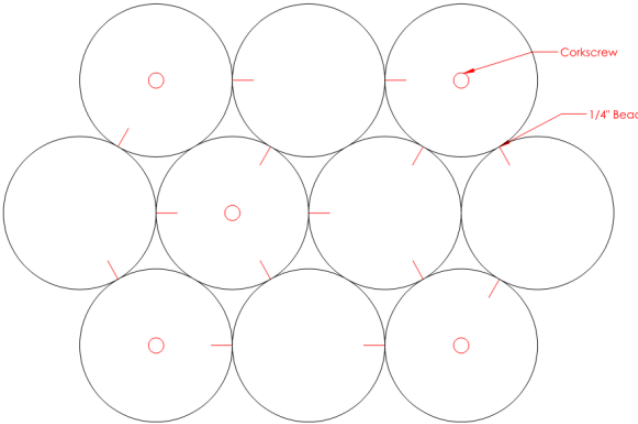


### **Hanging Cable from Wall to Wall (for WALL applications):**

- 1) Determine the length of cable required to hang it across room.
- 2) Attach one end of the wire/cable to one wall or I-beam, where required, using a welded or bent eyebolt, and if necessary, eye turnbuckles for additional structural horizontal support.
- 3) Use same attachment method for opposite wall and properly tighten
- 4) Optional: Install center support hooks or eyes towards center of structural ceiling to counter cable sag. Amount and specific locations of center supports to be determined by structural engineer or licensed contractor.
- 5) Slip eye loop of corkscrew hanger over wire/cable. Turn eye loops perpendicular to the baffle locking the cable in place. If a center ceiling support is employed, slide baffles from each end of the cable towards the center.
- 6) Slide baffle across the cable. For a nice, even dispersion across the wire/cable span, use plastic cable spacers for desired spacing. The spacers can be used on the ends of cables to prevent baffles from knocking into objects, and between baffles to pave a way for HVAC ductwork and light fixtures.
- 7) Follow best practices for structural mounting into walls. Such installation impacts appropriately land in the purview of a structural engineer.

### **Joining and Installing Baffle Clusters:**

- 1) Position 3 Cylindrical Baffles against one another and at the top of the baffle, with a marker make a small mark atop the baffle where the baffles meet.
- 2) Repeat Step 1 at bottom of baffles.
- 3) Take the marker and with a straight edge, draw a line from top mark to bottom mark.
- 4) Apply no more than ¼" bead of adhesive along the marked line.
- 5) Press baffles firmly together for a minimum 1 minute.
- 6) Repeat steps 1-5 until the desired # of baffles per cluster is complete.
- 7) Evenly dispersed, directly in the center of each baffle insert 2 corkscrews for clusters of 2-4 baffles, 3 corkscrews for 5-7 baffles, 4 corkscrews for 8-10 baffles, 5 corkscrews for 11-13 baffles, etc. etc

	
<p>Cylindrical Baffle showing adhesive lines</p>	<p>Cylindrical Baffle cluster w/ 2 corkscrews</p>
	
<p>Cylindrical Baffle cluster w/ 3 corkscrews</p>	<p>Cylindrical Baffle cluster w/ 4 corkscrews</p>
	<p>For additional layout guidance, contact Sustainable Materials.</p>
<p>Cylindrical Baffle cluster w/ 5 corkscrews</p>	



**Adhering baffles end to end:**

- Baffles come in a maximum length of 96”.
- To make longer baffles, spray 3M 90 Hi-Strength adhesive to both ends and hold tight for 5 seconds.
- Proceed with install.

**List of Accessories:**

- Nominal 1/16” to 3/32” uncoated cable, wire hanger or lightweight chain
- Wire/cable clamps
- 1/4" or 3/8" eyebolts (2 per cable if mounted from wall to wall)
- Standard galvanized rope thimble cable protector
- Turnbuckles (if deemed necessary)
- Please consult Sustainable Materials technical assistance to suit your specific project requirements.

Should have any questions, please let us know!